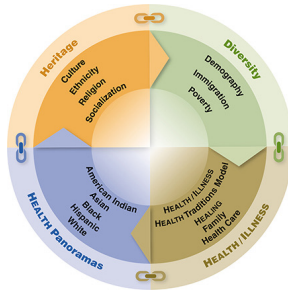


CONTENT
The HERITAGE CHAIN



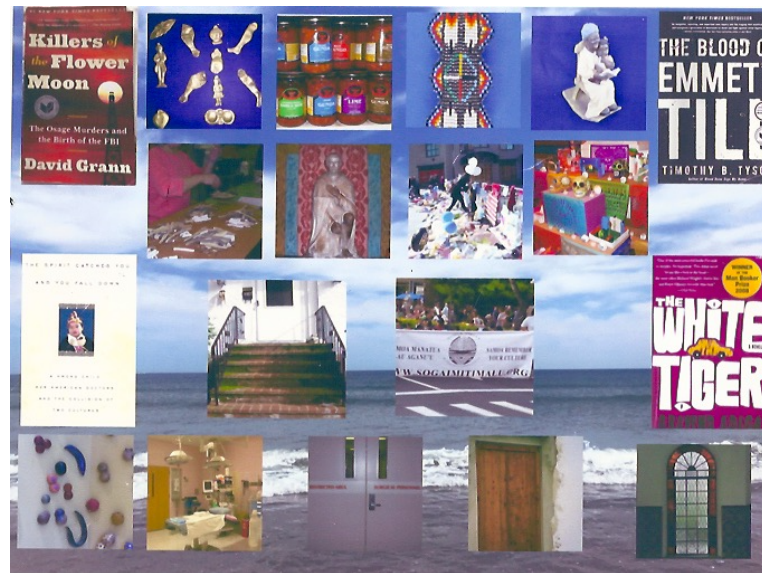
PROCESS
Ascending Steps



**HEALTH'S SOCIAL DETERMINANTS:
THE MANDATE FOR CULTURALLY
INCLUSIVE AND HOLISTIC TEACHING**

Rachel E. Spector, PhD, RN, CTN-A, FAAN
Boston College, Morrissey College of Arts and Sciences
The University of Texas at Austin School of Nursing, PhD, 1983

Conceptual Themes



“HEARING Voices” & “SEEING Visions”

The CULTURALCARE CIRCLE.

